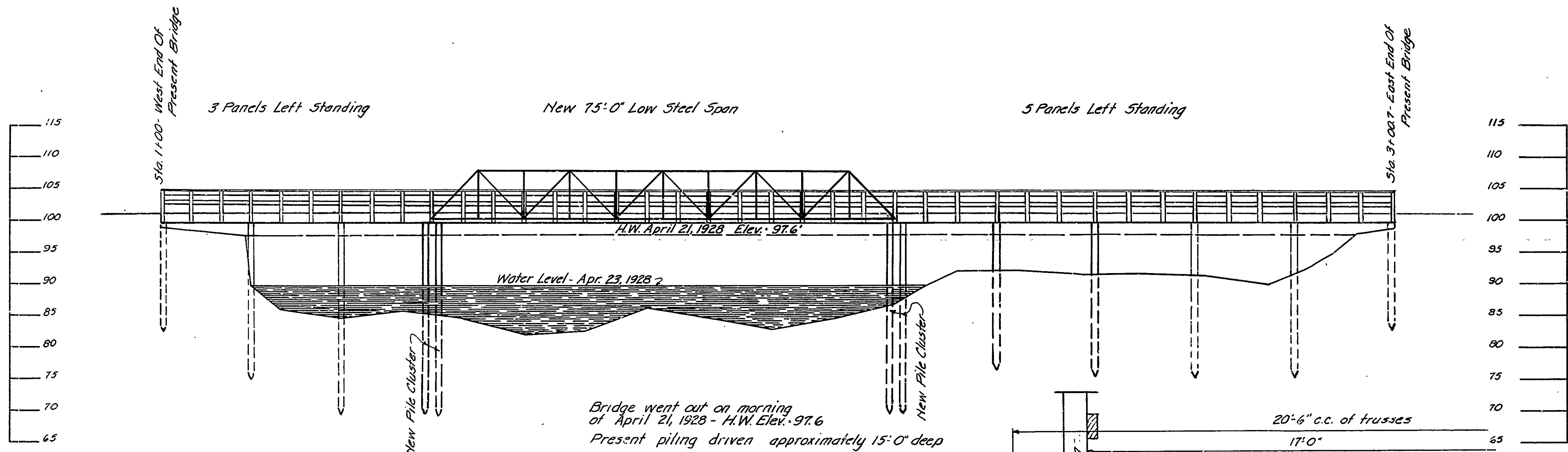


FISCAL YEAR	JOB NUMBER	SHEET NO.	TOTAL SHEETS
1928		1	2

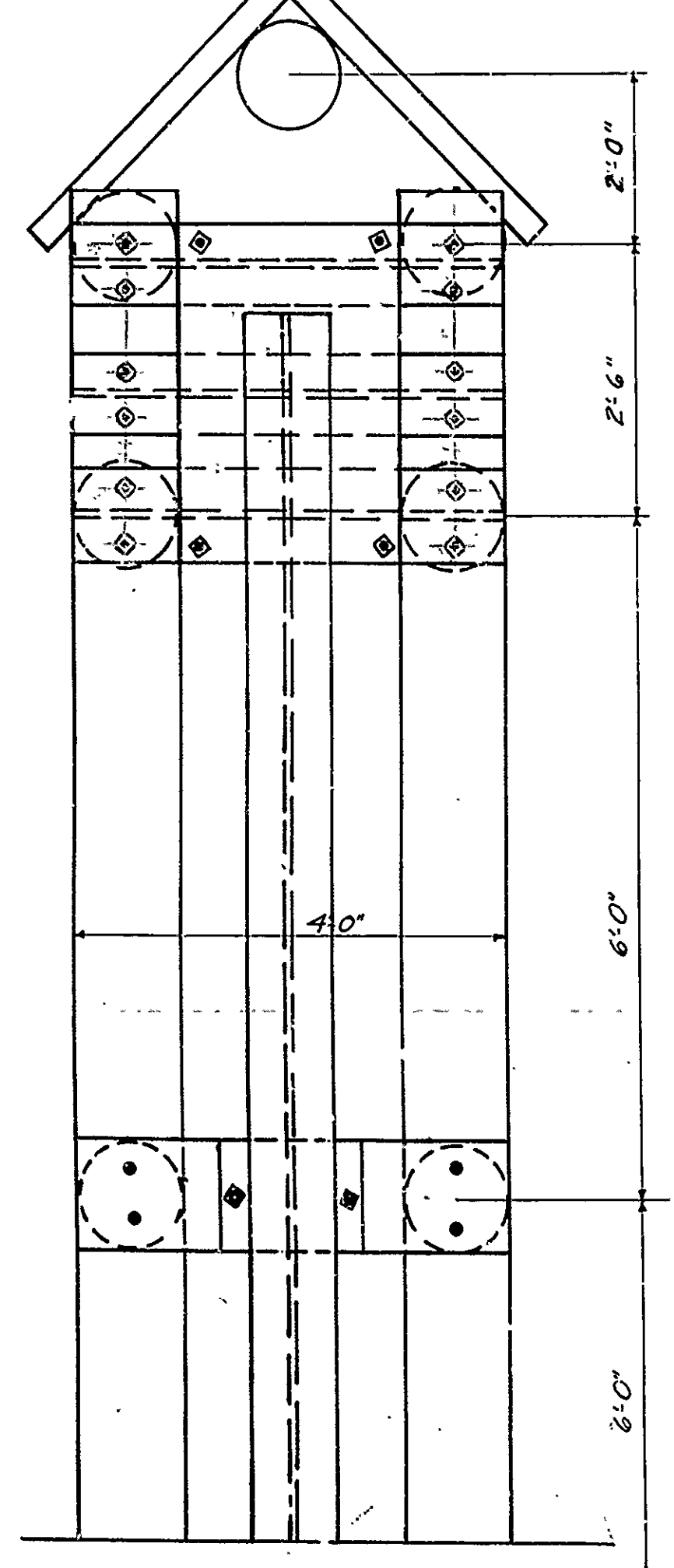
Pile Bent Piers Low Truss Span, Dr# 799



Bridge went out on morning of April 21, 1928 - H.W. Elev. 97.6
Present piling driven approximately 15'-0" deep

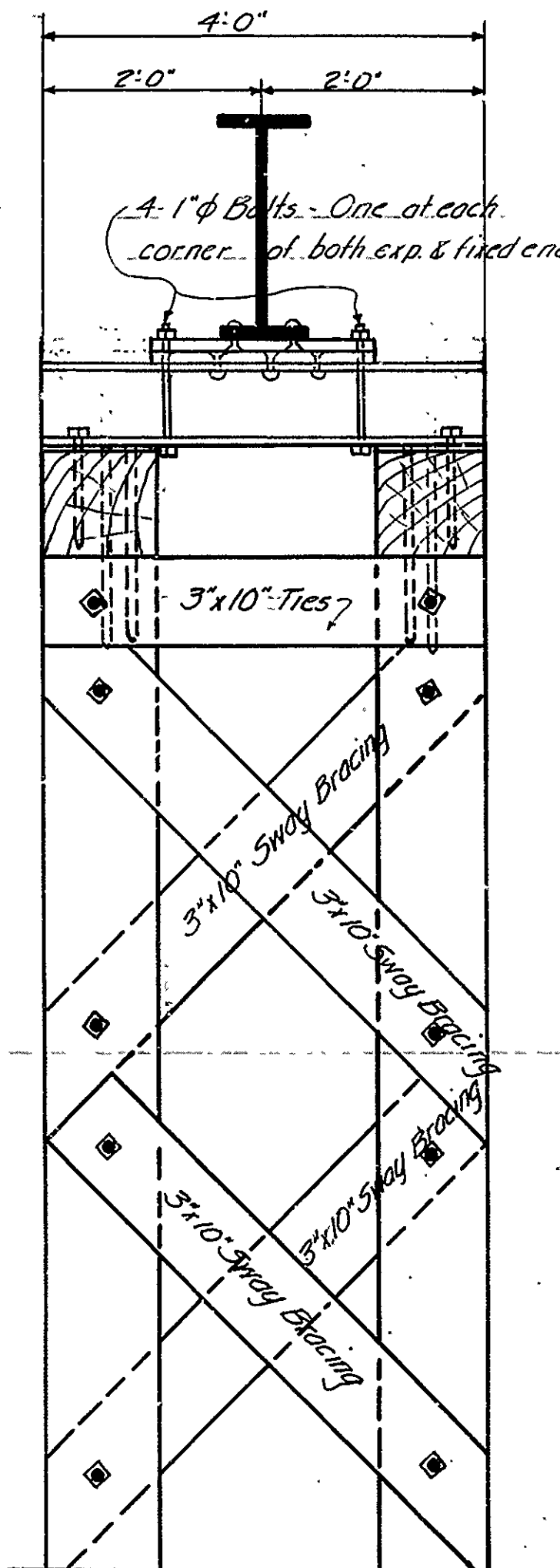
LAYOUT OF BRIDGE
Showing old parts of structure in light lines and showing new parts with heavy lines

3"x6" planks 6" apart from low water mark to top of pile piers. Nail to pile with 2.7" boat spikes.

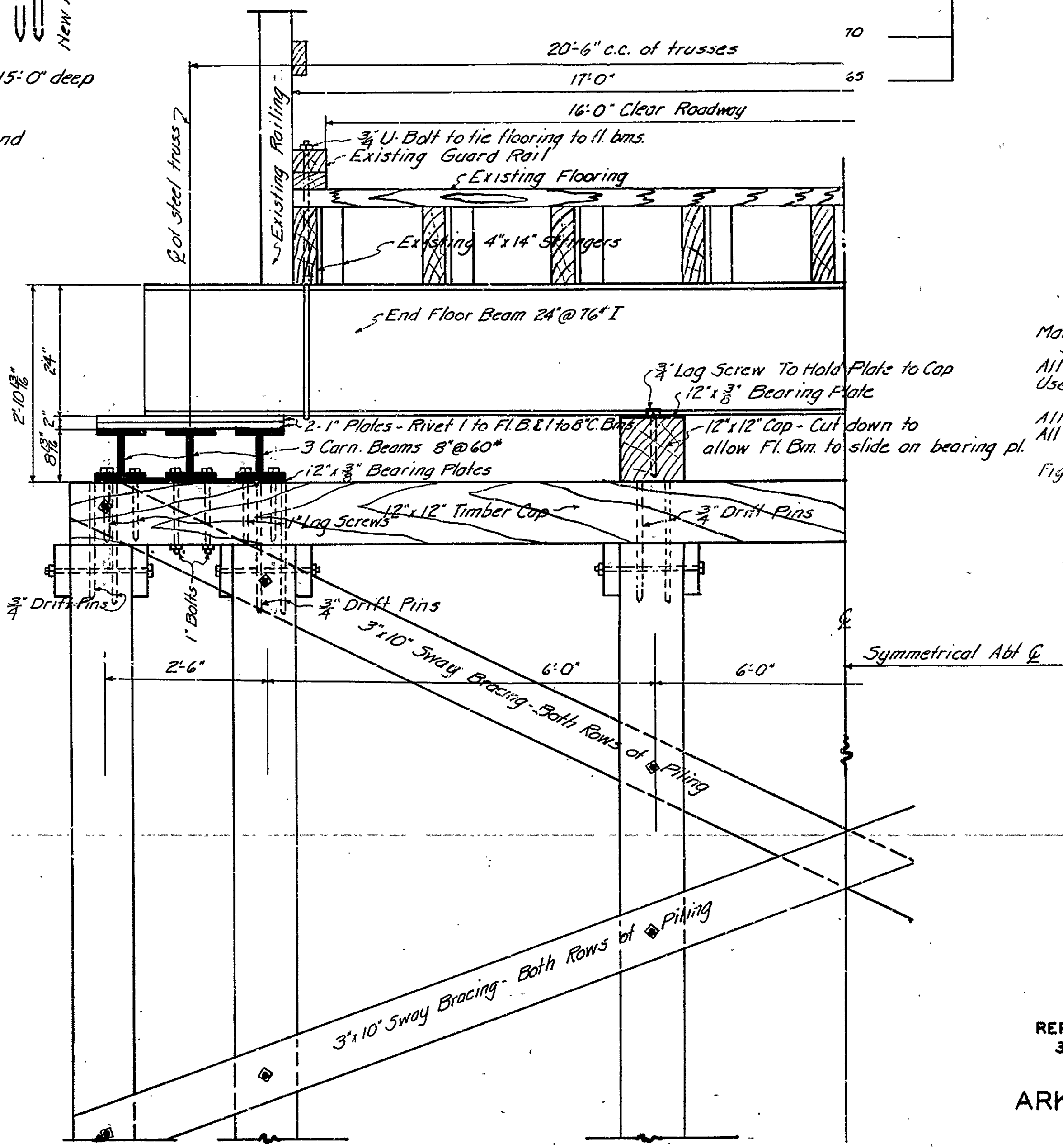


TOP VIEW

Bolts, pins, & screws used in holding truss supports to piling are to be paid for as structural steel. Other bolts, etc. in piling are not included.



END ELEVATION



SECTION ALONG C OF PIER

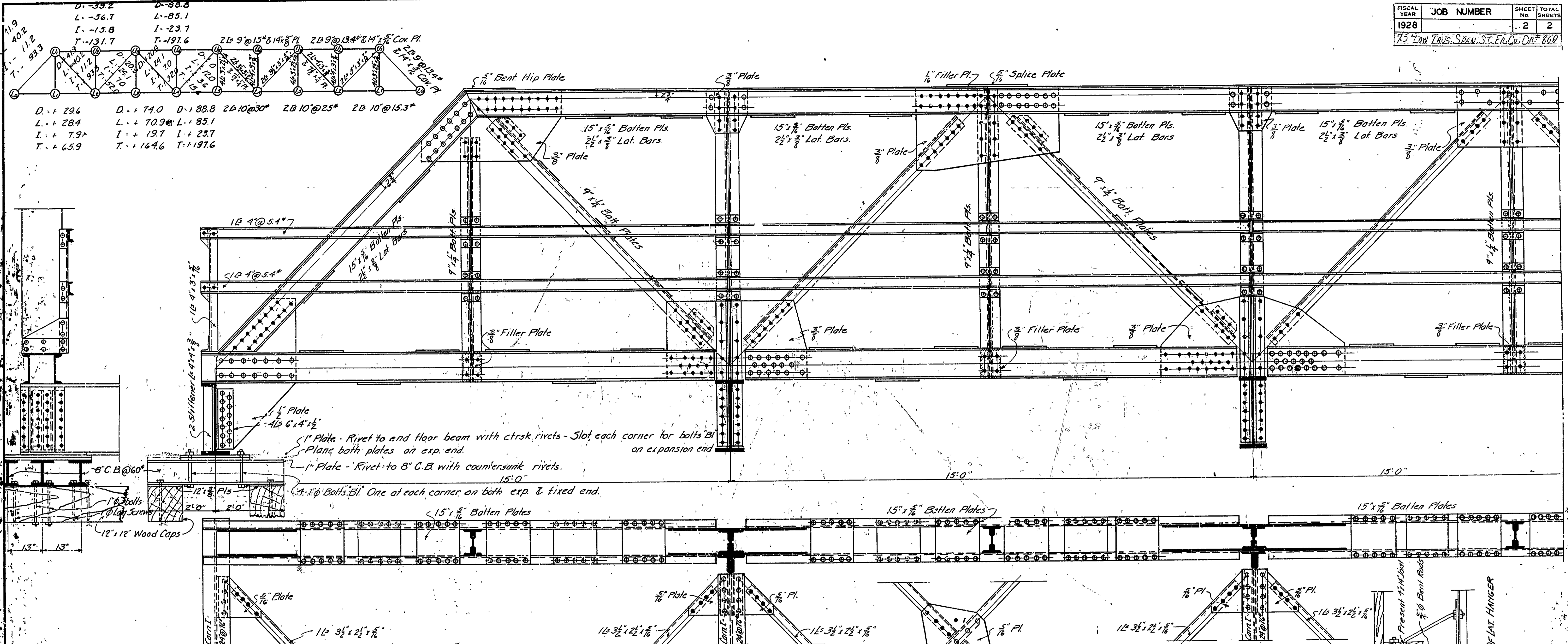
GENERAL NOTES

Materials & workmanship shall conform to standard Arkansas State Highway Specifications dated May 30, 1925.
All bolts, pins, screws, etc. to be $\frac{3}{4}$ " unless otherwise noted on plans. Use malleable or cast iron washers on both ends of bolts on wood surfaces. Use cut washers on steel surfaces.
All lumber to be treated.
All bearing plates & grillage shown on this sheet to be paid for as structural steel.
Figure new piling for 18'-0" penetration supporting 15 tons per pier.

PILE BENT PIERS
FOR 75'0" LOW TRUSS SPAN
REPAIR OF TIMBER BRIDGE OVER CROW CREEK, APPROXIMATELY 3.3 MILES EAST OF FOREST CITY., ST FRANCIS CO., ARK.
ROUTE 70 SECTION 19
ARKANSAS STATE HIGHWAY DEPARTMENT
LITTLE ROCK, ARK.

DRAWN BY: NOE
TRACED BY: NOE
CHECKED BY:
BRIDGE NO. 915
SCALE: AS NOTED
DRAWING NO. 799

FISCAL YEAR	JOB NUMBER	SHEET NO.	TOTAL SHEETS
1928	75' Low Truss Span, St. Fr. Co., Ark.	2	2



D-39.2	D-88.8
L-56.7	L-85.1
I-15.8	I-23.7
T-131.7	T-197.6

2B 9@15' 1/2 x 3/8" Pl. 2B 9@13' 4" 3/4" Cor. Pl. 2B 9@15' 1/2 x 3/8" Pl. 2B 9@13' 4" 3/4" Cor. Pl.

D-296	D-740	D-888	2B 10@30'	2B 10@25'	2B 10@15.3'
L-284	L-709	L-851			
I-7.9	I-19.7	I-23.7			
T-659	T-164.6	T-197.6			

SPECIFICATIONS

LIVE LOAD
 Uniform - 105# per sq. ft. of roadway
 Concentrated - 2-15 ton trucks as shown
 Impact - 100 - L + 300
 Designed for 18'-0" roadway in the future.

with 2"x6" laminated wood floor & steel stringers to be used in the future.

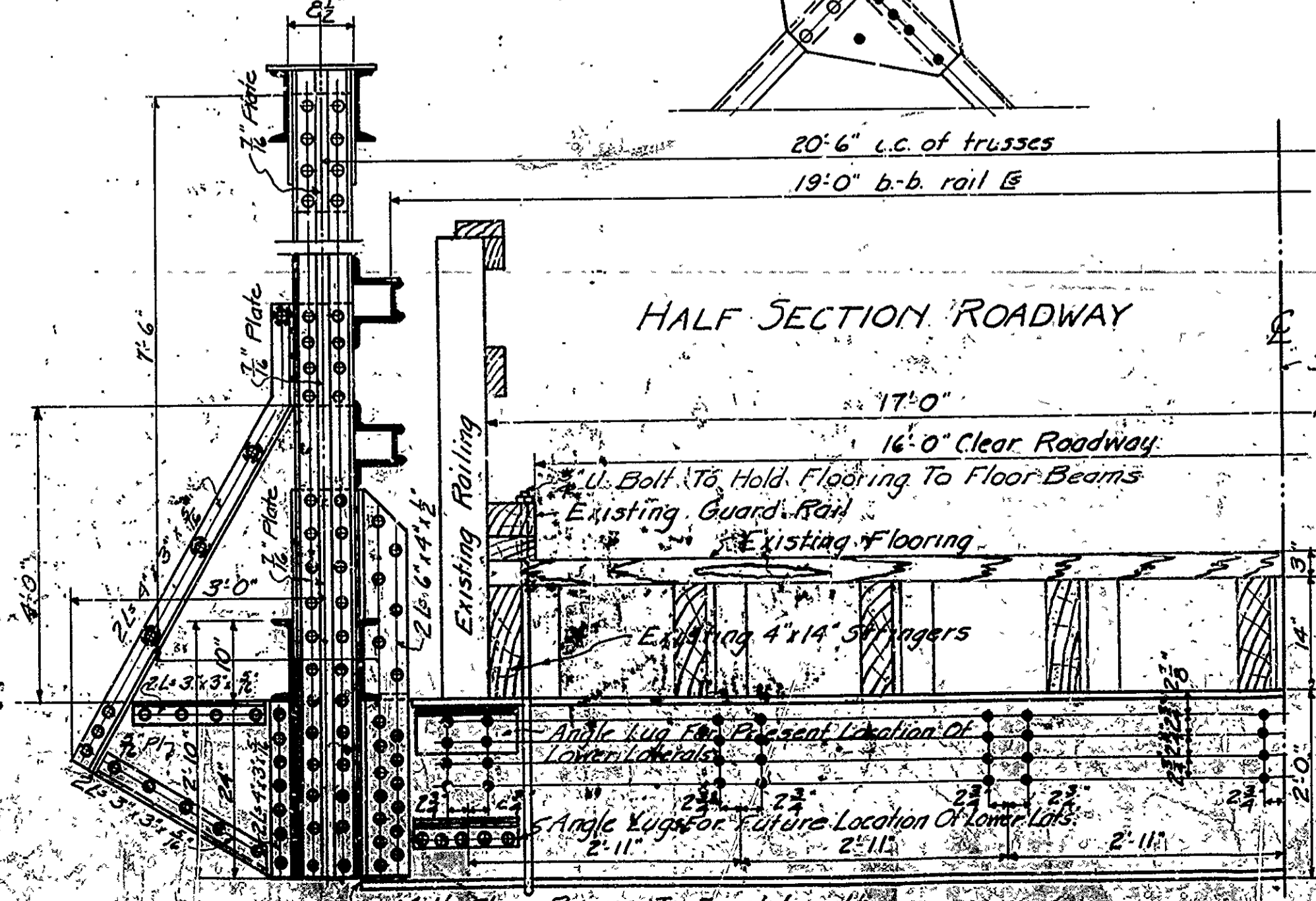
Unit Stresses - See Arkansas State Highway Specifications dated May 30, 1925.

Shop connections to be made with 3/4" rivets - field connections to be made with 1/2" turned bolts.

Open Holes - Punch rivet holes in main members 3/4" smaller than rivets. Ream to 1/8" larger than rivet specified during shop assembly.

Rivet holes in tension members so spaced that only one hole is deducted from each angle of the point of maximum stress. Deduct 1/4" flange hole and 3/8" web holes in each channel.

Shop Paint - 1 coat red lead & raw linseed oil.
 Field Paint - 2 coats as approved by the engineer.
 Batten pls spaced not over 3'-0" cts on tension members.
 Floor beams to be milled to exact length.
 This drawing is general only. Shop drawings must be made in compliance with specifications, must be submitted and approved before fabrication begins.



STRUCTURAL STEEL
 Estimated Weight - 52,270 lbs.

FLOOR BEAM DATA

D.L.M.	20.5 x 12 x 20.387 ÷ 8	628,000"
L.L.M.	24,400 x 10.33 x 12 - 2,200 x 9 x 12	1,706,400"
Impact @ 30%		511,920"
Total Moment On Floor		2,846,320"
Sec. Mod	2,846,320 ÷ 16000 = 177.8	
Use Carn I	24" @ 76"	Sec. Mod. 187.0

Note: Either Carn or Beth sections of equal or greater strength may be used for floor beams, but payment will be for sizes shown on plans.

75' 0" LOW TRUSS SPAN

REPAIR OF TIMBER BRIDGE OVER CROW CREEK, APPROXIMATELY 3.3 MILES EAST OF FOREST CITY, ST FRANCIS CO., ARK.

ROUTE 70 SEC. 19
ARKANSAS STATE HIGHWAY DEPARTMENT
 LITTLE ROCK, ARK.

Drawn By: NOE Date: _____
 Field By: NOE Date: _____
 Checked By: _____ Date: _____
 Scale: in = ft.
BRIDGE No. 915 **DRAWING No. 800**